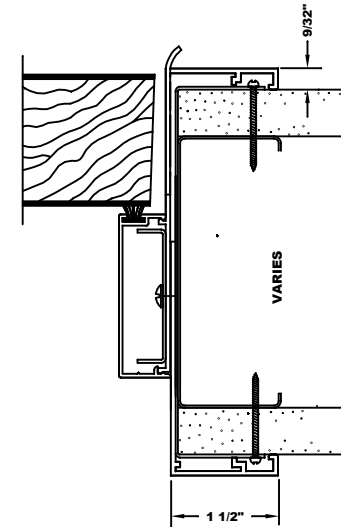
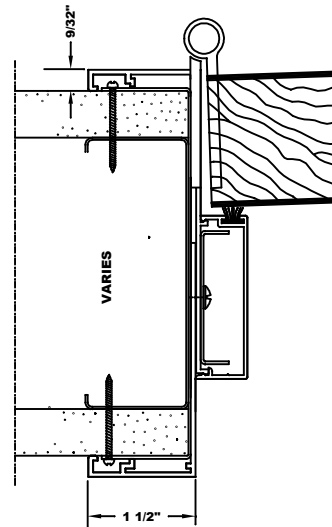
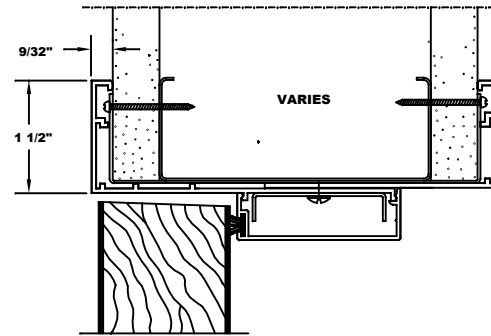
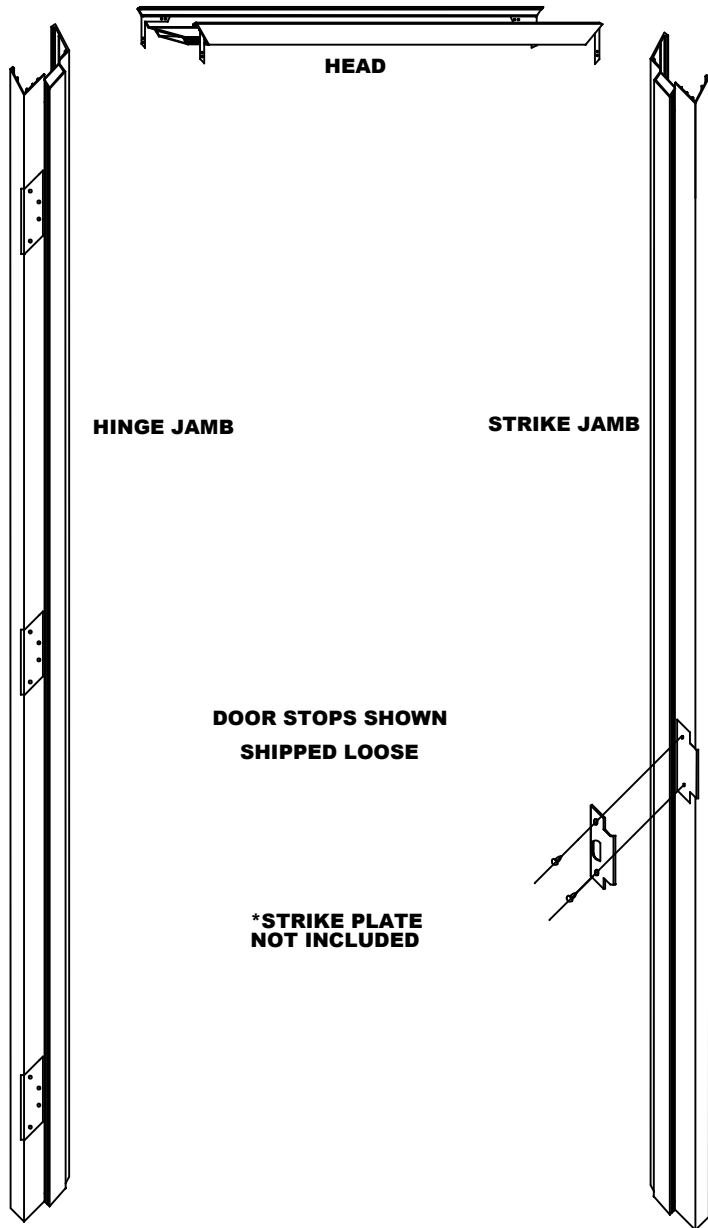


Classic Adjustable 90 Minute

MITERED CORNERS



RACO Interior Products
www.racointeriors.com
800.272.7226

NOT TO SCALE

Classic Adjustable 90 Minute

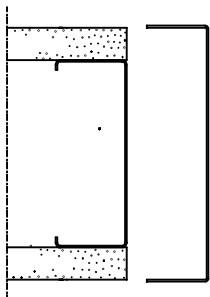
MITERED CORNERS

GENERAL INSTALLATION INSTRUCTIONS

Drywall Rough Opening:
Height DLO + 1/4"
Width DLO + 7/16"

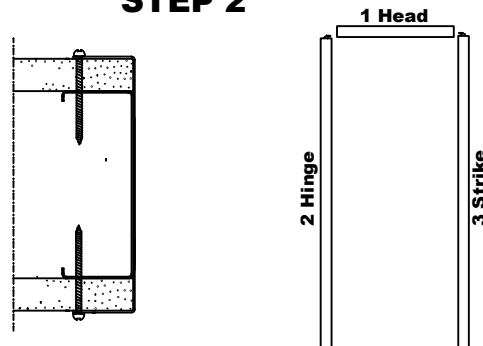
- 1** Shoot floor track to concrete at each side of opening. Install steel channels around sheet rock opening at head and jamb, engaging tabs at top of jamb channels to steel channel at head.
- 2** Plumb one side of channel and screw thru the guide holes into "C" stud at 8" on center using 1-5/8" screws. Plumb other side of channel with header and attach.
- 3** Beginning with the header, wrap the steel channel with two-piece aluminum frame. Position the "U" steel channel in the stop and attach with self-tapping screws. Repeat with jamps, be sure jamps are tight with mitered header. Attach snap-on door stops to jamps.
- 4** Drill and tap for hinges prior to installing. Notch for strike. Steel studs do not come pre-drilled and tapped from the factory.

STEP 1



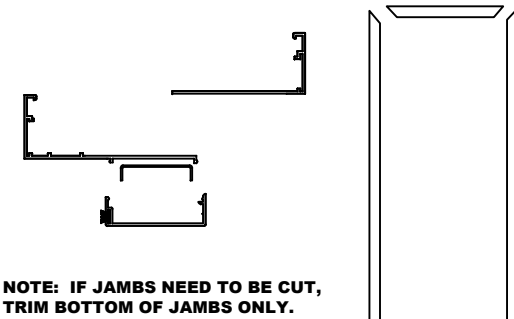
STEEL CHANNEL / WALL
ASSEMBLY

STEP 2



PLUMB AND ATTACH STEEL
CHANNEL TO WALL

STEP 3



ASSEMBLE AND INSTALL
ALUMINUM JAMBS