

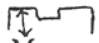
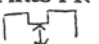
RACO

"Interior Office Fronts"

TRANSOM FRAME INSTALLATION

NOTE: When installing glazing lineals (PR-5, PR-5M, PR-7D, PR-7M), keep the wide and narrow sides aligned all around the window. Glass is installed against the wide side and vinyl inserted from narrow side to center glass.

INSTALL OUTSIDE PERIMETERS FIRST: HINGE JAMB (detail 5), TRANSOM HEADER (detail 4), AND GLAZING JAM AT WALL (detail 21).

1. Transom hinge jamb: cut PR-6M exact length from floor to ceiling. The drywall C-stud, R-2 wood stud, and PR-6M are attached as a unit, then installed.
2. Transom header: cut PR-1 exact length of opening from hinge jamb to other wall less 1/2" for PR-5M. Attach PR-1 to hinge jamb with R-18 clip, then attach PR-1 to grid ceiling.
3. Glazing Jamb: cut PR-5M exact length floor to ceiling. (If you received PR-5M milled at one end, cut flush for butt joint with PR-1. The milled end is used when installing under PR-1 as for a vertical mullion). Attach PR-1 and PR-5M at corner with R-20B Clip.
4. Snap-in hinge jamb PR-4AH will be notched where the door stop attaches. Measure exact length of jamb from rabbet line to floor:  Cut excess length from bottom. Snap PR-4AH into PR-6M and screw to R-2 wood stud. Measure exact length of door stop from notch to floor:  Cut excess and attach to hinge jamb.

INSTALL THE STRIKE / SIDELITE JAMB (Detail 21)

1. Mill one end of the PR-6M to fit under PR-1, cut to exact length from top of mill to floor. Install R-20 clip in bottom of PR-6M. Measure door opening width and attach PR-6M to PR-1 with R-18 clips.
2. Measure and cut snap-in strike jamb PR-4AS and snap-on door stop same as for hinge jamb (#4 above). Screw PR-4AS to R-2 wood stud and R-46D strike clip and snap into PR-6M. Cut piece of PR-5 from bottom of PR-1 to floor, snap into other side of PR-6M (sidelite).
3. Cut piece of PR-5 width of glass opening and snap into PR-1. Cut 2 pieces of PR-5 the length from bottom of PR-1 to tops of door jambs and snap into PR-6M.

INSTALL TRANSOM DOOR HEADER

1. Cut piece of PR-7D and PR-4A door header with door stop attached to door opening width. Remove snaps from PR-7D base and attach PR-4A to PR-7D. Align the door header to the door jambs and attach PR-7D to the jambs with 2 each R-56B clips each side. Attach wide snap to PR-7D base and the transom is ready for installation of glass.

INSTALL GLAZING SILL FOR SIDELITE

1. Cut PR-7D to glass opening width and remove snaps. Attach PR-7D base with 2 each R-56B Clips at each corner. Attach wide snap to PR-7D base. Sidelite now ready to install glass.

HORIZONTAL MULLIONS: Cut PR-7M to glass opening width, remove snaps and attach PR-7M base with 2 each R-56B clips each side. Attach wide snaps to base and ready to install glass.

VERTICAL MULLIONS: PR-5M is milled at top to fit into PR-1 and attach with R-20B clip at head. An R-16 clip is inserted in bottom of PR-5M to anchor to floor. Cut piece of PR-5 from bottom of PR-1 to floor and snap into PR-5M to make vertical mullion. Glazing header crosses vertical mullions same as at sidelite jamb. Glazing Sill and Horizontal Mullions installed same as above.

Sample of shop drawing and illustration of clips attached for reference along with detail sheets.

P.O. Box 55527
Houston, TX 77255
713-682-6100
713-682-7226
713-682-2079 (fax)

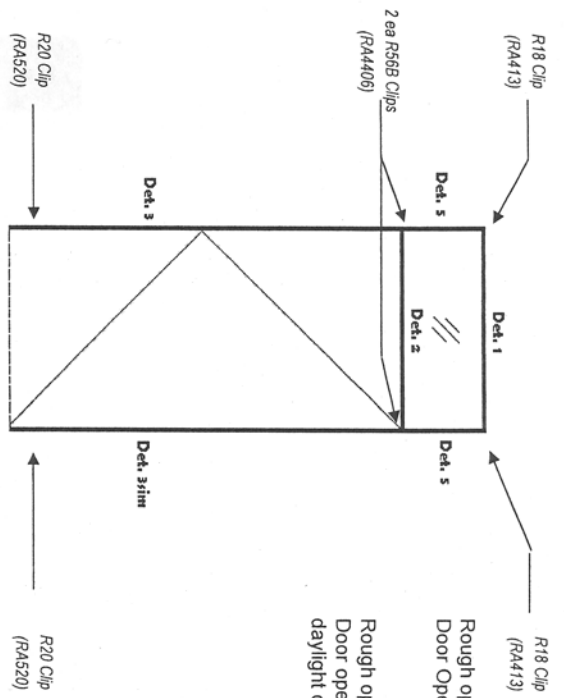
Dallas

Houston

Chicago

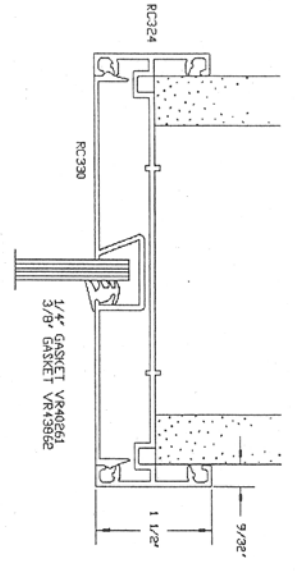
RACO Interior Office Fronts

Detail Sheets (not to scale)

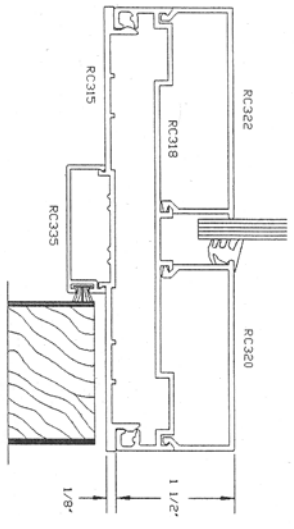


Rough opening Width =
 Door Opening + 2-1/4"

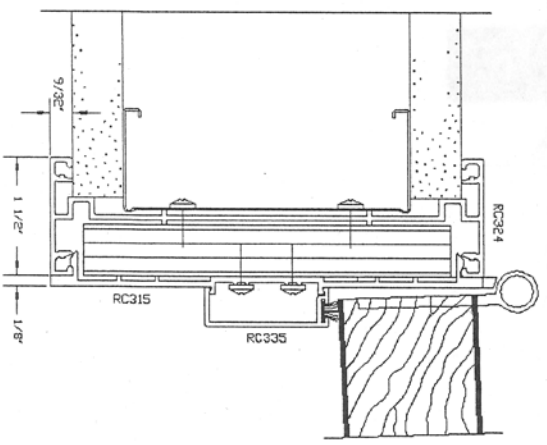
 Rough opening height =
 Door opening + Transom
 daylight opening + 1-5/8 + 1"



Detail #1

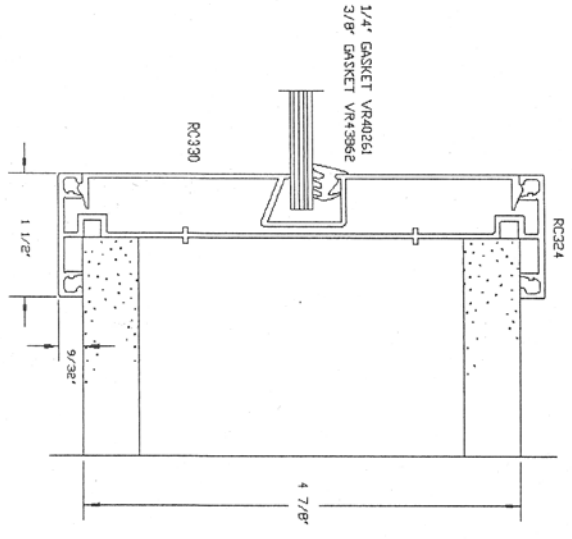


Detail #2



Det. 3
 Det. 3 sim (strike side)

**Save last C-stud to attach to RC324 & Wood blocking prior to installation into the rough opening. then screw off to wall behind face of frame into c-stud to anchor unit.



Det. 5