

# RACO INTERIORS

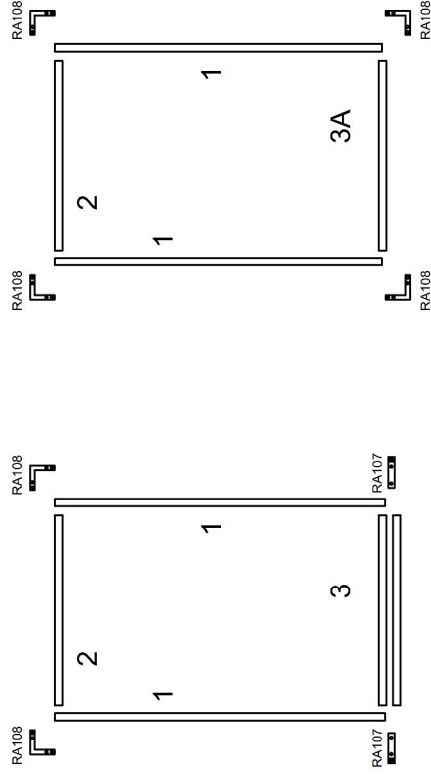
## SOLUTIONS II Borrowed Light Full and Partial Height

### FRAME MUST BE INSTALLED PLUMB AND SQUARE

NOTE: TRIM REQUIRES FIELD NOTCHING AT EACH CLIP CONNECTION

#### General Installation Guidelines

1. INSTALL VERTICALS OVER WALLS LOOSE
2. INSTALL HEADER OVER WALL, AND SET SILL CAN ON FLOOR. CENTER EACH IN WALL.
- 2A INSTALL BASE OVER DRYWALL IN BETWEEN VERTICAL (PARTIAL HEIGHT)
3. PULL ONE VERTICAL TO HEADER AND ATTACH CORNER CLIP. LEVEL JAMBS AND HEADER AND ATTACH TO WALLS
4. SCREW SILL CAN AND BASE TO FLOOR
- 4A SCREW SILL TO WALL (PARTIAL HEIGHT)
5. PULL OTHER JAMB TO HEADER AND SILL. ATTACH CLIPS TO CORNERS AND FASTEN JAMBS TO WALL.
6. INSTALL ONE SIDE OF VINYL. INSTALL GLASS AND REMOVABLE STOP AND FINISH GLAZING VINYL



#### FULL HEIGHT

##### CUT FORMULA

HEAD AND SILL = DAYLIGHT OPENING

WALL JAMB = ROUGH OPENING - 3/8"

##### ROUGH OPENING

HEIGHT = DAYLIGHT OPENING + 3/4" + BASE HEIGHT

WIDTH = DAYLIGHT OPENING + 1-1/2"

INVERT STUDS AT VERTICALS, HEAD , AND BASE

#### PARTIAL HEIGHT

##### CUT FORMULA

HEAD AND SILL = DAYLIGHT OPENING

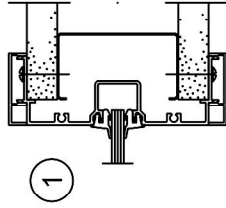
WALL JAMB = DAYLIGHT OPENING + 1-3/8"

##### ROUGH OPENING

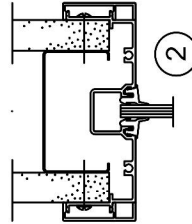
HEIGHT = DAYLIGHT OPENING + 1-3/4"

WIDTH = DAYLIGHT OPENING + 1-1/2"

INVERT STUDS AT VERTICALS, HEAD , AND BASE

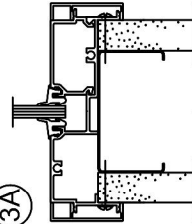


1

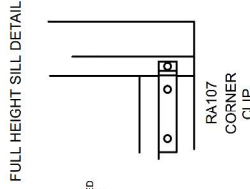
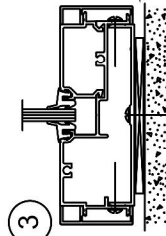


2

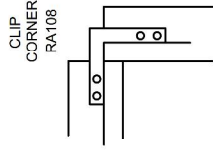
3A



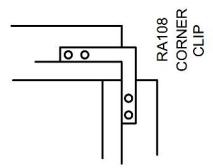
3



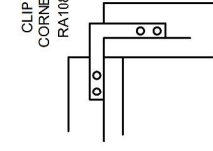
FULL HEIGHT SILL DETAIL



FULL HEIGHT HEAD DETAIL



PARTIAL HEIGHT SILL DETAIL



PARTIAL HEIGHT HEAD DETAIL

NOTE: CHECK WALL THICKNESS AND ROUGH OPENING DIMENSIONS, DO NOT PROCEED UNLESS THE DRYWALL IS WITHIN TOLERANCE.

**NOT TO SCALE**

REVISED 3/7/2017