

RACO INTERIORS

Lead Lined Frame Info. Sheet

WHERE LEAD LINED FRAMES ARE NEEDED

- * MICROWAVE TRANSMISSION RMS
- * MEDICAL SCHOOLS
- * DEFENSE, MILITARY, SECURITY ENVIRONMENT
- * AIRPORTS
- * X-RAY AND IMAGING ROOMS
- * NUCLEAR POWER PLANTS

PURPOSE

- * CONTAIN RADIATION IN SENSITIVE AREAS

RACO LEAD LINE FRAMES WILL ACCOMADATE THE FOLLOWING WALL SIZES

- * CLASSIC 375, 487
- * SOLUTIONS II 375, 462, 487, 500, 525, 612, 725

RECOMMENDED FRAME SYSTEM IN LEAD LINE CONDITIONS

- * SOLUTIONS II

KEY NOTE:

FRAMES MUST THROAT THE WALL. WALL IS TYPICALLY CONSTRUCTED USING LEAD LINED SHEETROCK. NO ABUTT CONDITIONS ACCEPTABLE.

FACTORY INSTALLED LEAD AVAILABLE IN

- * 1/16" THICKNESS

RECOMMENDED MAXIMUM DOOR SIZES

- * SINGLE 4ft x 8ft
- * DOUBLE 8ft x 8ft

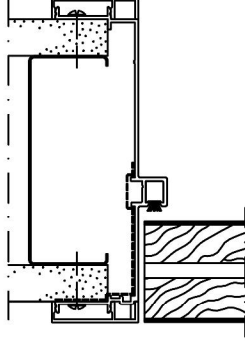
APPROXIMATE WEIGHT OF LEAD LINED DOORS (1/16" LEAD)

- * 3ft x 7ft 200 POUNDS
- * 4ft x 7ft 260 POUNDS
- * 3ft x 8ft 230 POUNDS
- * 4ft x 8ft 300 POUNDS

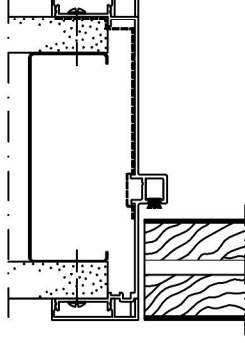
BECAUSE OF WEIGHT OF LEAD LINED DOORS, IT IS RECOMMENDED THAT INSTALLATION SCREWS ARE NO MORE THAT 6"-8" APART TO ENSURE FRAME IS ADEQUATELY SECURED TO THE WALL.

AS A STANDARD, DOOR HAND WILL DETERMINE WHERE LEAD IS INSTALLED IN THE FRAME.

- * RIGHT OR LEFT HAND (SWING IN) DOORS LEAD IS INSTALLED ON DOOR SIDE



- * REVERSE HAND (SWING OUT) DOORS LEAD IS INSTALLED OPPOSITE DOOR SIDE



APPROVED HARDWARE

- * CYLINDRICAL / MORTISE LOCKS w/ ASA STRIKE
- * FLUSH BOLTS
- * DEAD BOLTS
- * EPT SWITCHES
- * MORTISED OVER-HEAD HOLDERS
- * SURFACE CLOSERS

PIVOTS

- * RIXSON MODEL 195 WITH M-19 INTERMEDIATE OR SIMILAR. THIS PIVOT SET RATED FOR 400 POUNDS

CONTINUOUS TYPE HINGE

MORTISED HINGES - MINIMUM OF (4) 5" HEAVY WEIGHT

NO OVERHEAD CONCEALED CLOSERS

IT'S THE CUSTOMERS RESPONSIBILITY TO CONSULT WITH HARDWARE MANUFACTURES FOR WEIGHT LIMITATIONS AND RECOMMENDATIONS.

NOT TO SCALE

REVISED 3/5/2017