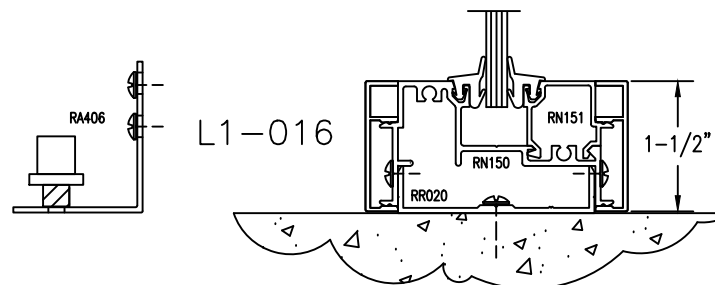
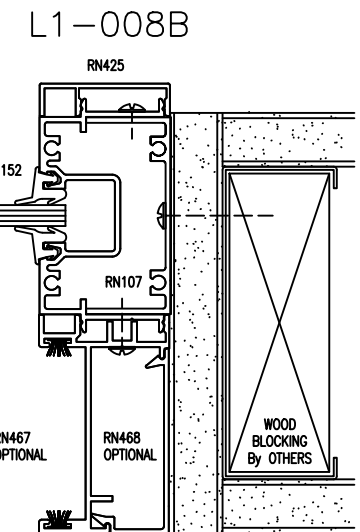
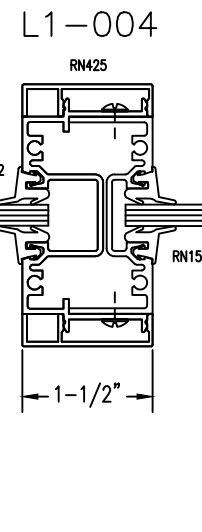
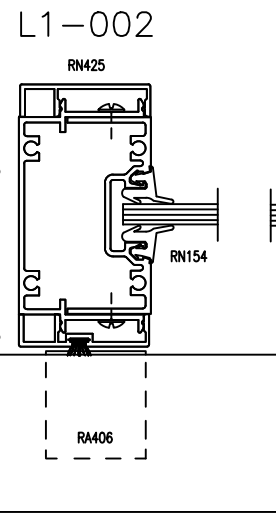
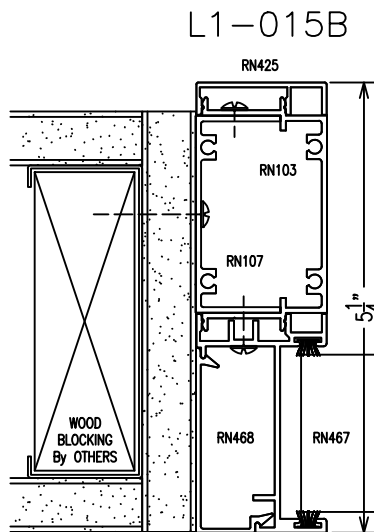
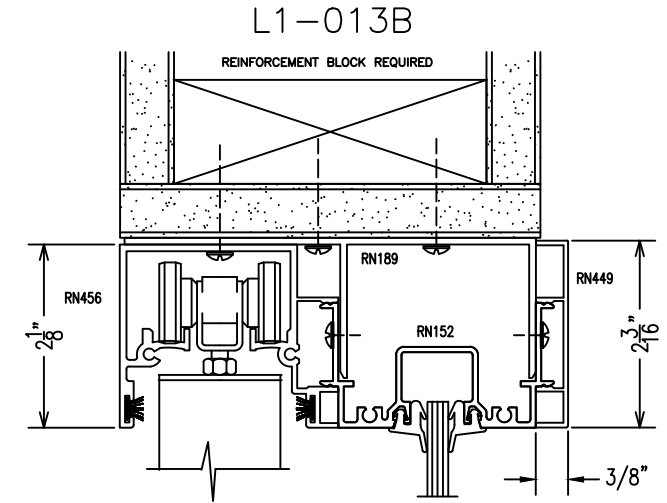
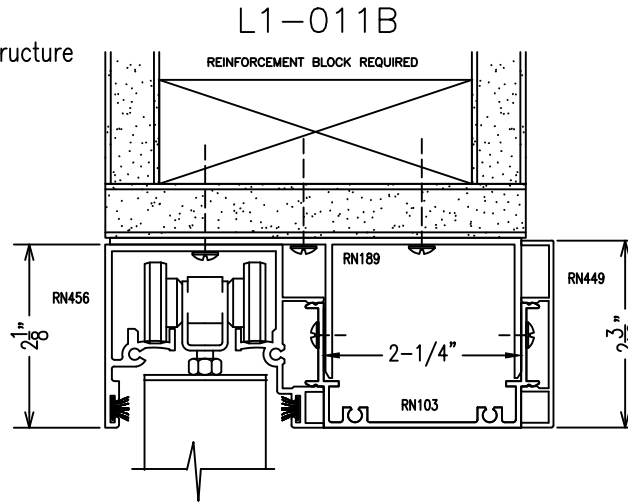




RACO 225 Offset Slider

Typical Door, Frame & Track Details

1. Install RN189 Level to reinforcement structure
2. Assemble Sidelight
3. Install Sidelight
4. Install RN103 Parts
5. Screw RN103 / RN152 to RN189
- 6a. Screw RN107 to Drywall
- 6b. Screw RN103 to RN107
7. Set door opening width
8. Screw RN152 to Drywall
9. Verify plumb/square of frame
10. Anchor RN150/RR020 to floor
11. Load rollers into RN456
12. Install RN456 track
13. Nut/Bolt assembly RN456 to RN189
14. Install RN467
15. Install RA406 clip at floor
16. Install RN468 snap cover
17. Install trim covers after glass is installed
18. Install guide pin
19. Hang door



SLIDER RECEIVERS REQUIRE SPECIAL CUTTING INSTRUCTIONS BASED ON CONDITION. PLEASE CONTACT RACO-LIBERTY OFFICE FOR SPECIFIC DETAIL INSTRUCTIONS. 844-900-9876

