

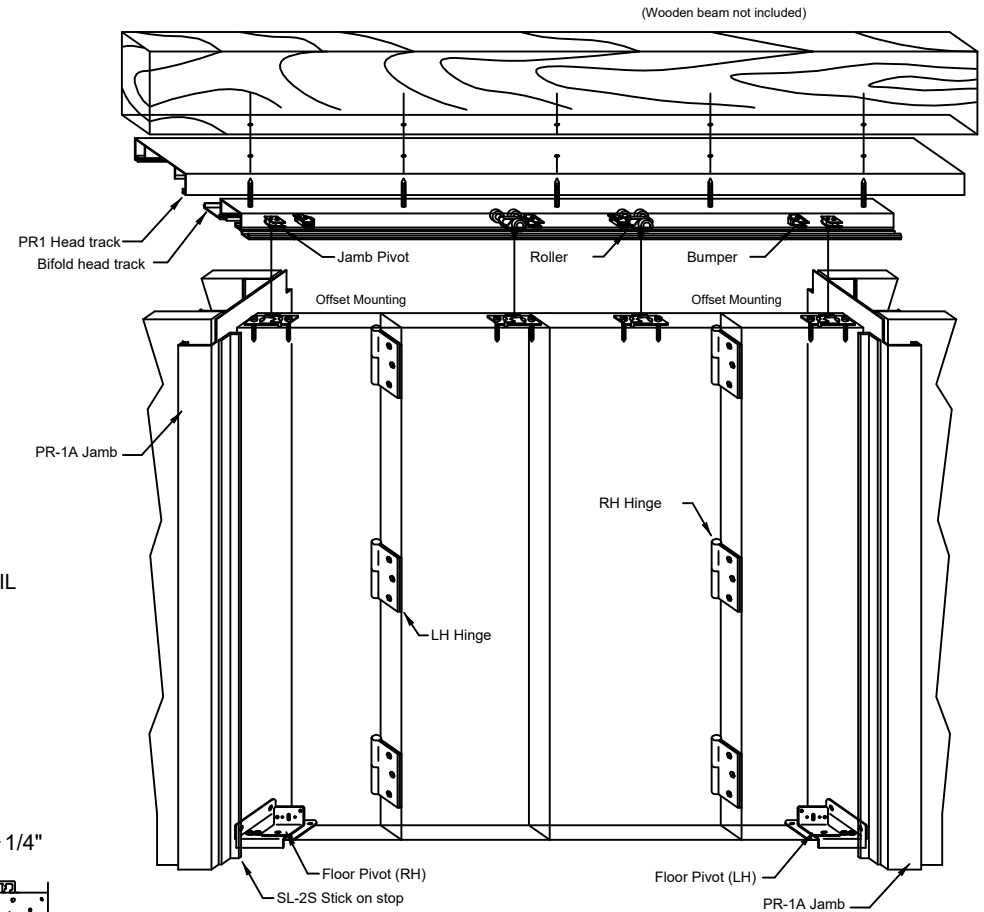
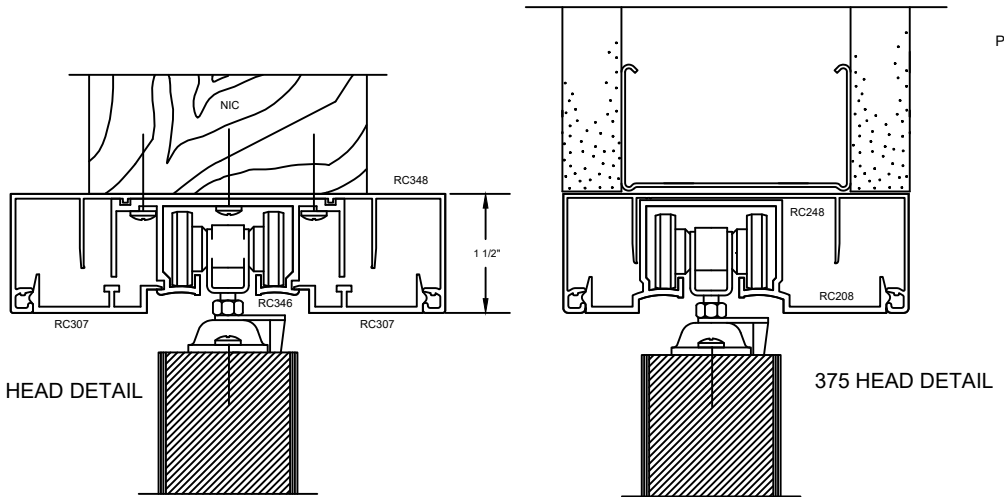


# CLASSIC Bi-Fold Door Frame

## DRYWALL AT HEAD GENERAL INSTALLATION INSTRUCTIONS

NOTE: PARTIAL HEIGHT HEAD CONDITION ABUTTS WALL

1. INSTALL HEAD TRACK (PR-1) ATTACH TO STRUCTURAL SUPPORT.
2. INSTALL PR-1A JAMBS ATTACH USING COMMERCIAL GRADE CONSTRUCTION ADHESIVE.
3. PLACE EH773 ROLLERS, BUMPERS, AND PIVOT HARDWARE INTO THE ROLLER TRACK.  
ATTACH THE ROLLER TRACK AT 12" ON CENTER.



4. INSTALL LEFT AND RIGHT HAND FLOOR PIVOTS  
PLUMB AND LEVEL WITH HEADER PIVOT
5. HANG AND ADJUST DOOR.
6. INSTALL SL-2S STOPS TO JAMBS

