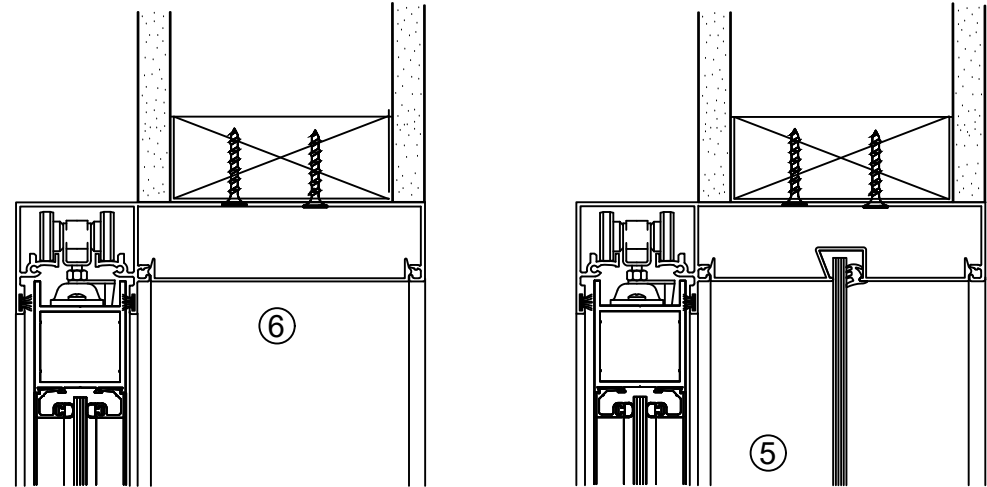




CLASSIC Offset Slider with Sidelight

GENERAL INSTALLATION INSTRUCTIONS

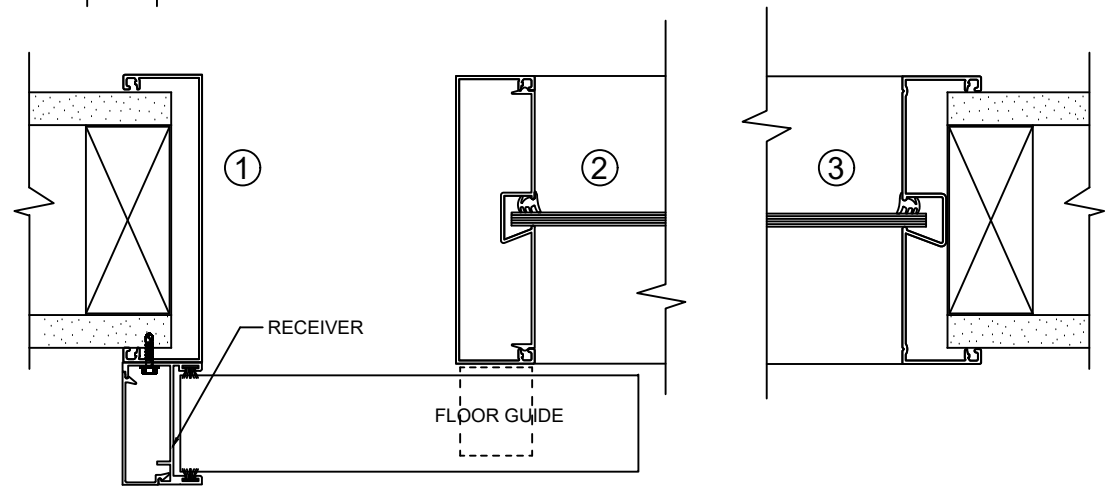
1. ATTACH PR-1 VERTICAL TO TOP OF CASED OPENING.
2. ATTACH PR5M GLAZING JAMB TO SIDELIGHT END WALL.
3. MEASURE AND CUT HEAD TRACK BETWEEN PR-1 AND PR5M VERTICALS AND ATTACH TO STRUCTURE SUPPORT.
4. INSTALL ROLLER AND BUMPERS INTO HEAD TRACK.
5. CUT PR-11 CASE OPENING HEAD FILLER DAYLIGHT WIDTH + 1/8" SNAP INTO PLACE.
6. CUT PR-1 SIDELIGHT VERTICAL FROM BOTTOM OF PR-11 TO FLOOR.
7. CUT PR-5 SIDELIGHT INSERT. SNAP INTO PR-1.
8. CUT PR-5 SIDELIGHT HEAD INSERT BETWEEN VERTICAL AND SNAP INTO PLACE.
9. MEASURE AND CUT PR-70 BASE BETWEEN SIDELIGHT VERTICAL. ATTACH USING R-56B CLIPS.
10. CUT RECEIVER FROM THE BOTTOM OF TRACK TO FLOOR.
11. ATTACH RECEIVER.
12. HAND AND ADJUST DOOR.
13. ATTACH FLOOR GUIDE.



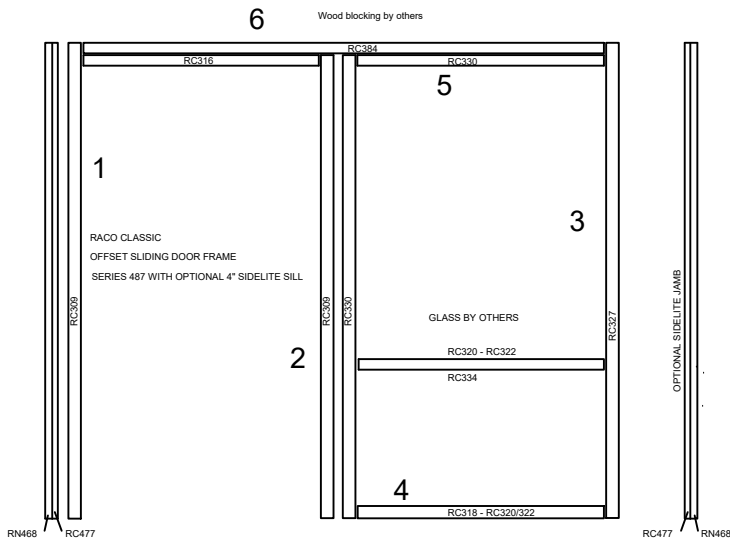
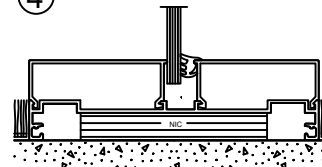
DOOR / ROLLERS

WOOD DOOR ROLLER BRACKET PLACEMENT:

Place hanger bracket at edge of door, 2" from edge of door to C/L of bracket.



④



NOT TO SCALE