



CLASSIC 90 Min Rated Adjustable Door Frame

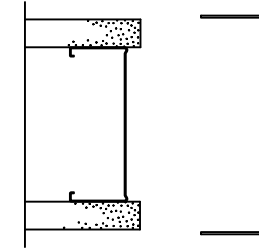
DRYWALL AT HEAD GENERAL INSTALLATION INSTRUCTIONS

(20 MINUTE LABEL OR NO LABEL)

1. INSTALL STEEL CHANNEL AROUND DRYWALL AT HEAD AND JAMBS, ENGAGING TABS AT TOP OF JAMB CHANNEL TO STEEL CHANNEL AT HEAD
2. PLUMB THE VERTICAL STEEL CHANNEL AND LEVEL THE HEAD STEEL CHANNEL. SCREW THROUGH GUIDE HOLES INTO C-STUD AT 8" ON CENTER ON BOTH SIDES OF CHANNEL. USING 1-5/8" SCREW. ENSURE THE INSIDE DIMENSION AT VERTICAL STEEL CHANNELS ARE EQUAL AT THE TOP AND BOTTOM.
3. BEGINNING WITH THE HEADER, WRAP THE STEEL CHANNELS WITH 2 PIECE ALUMINUM FRAME. ENGAGE HEAD AND VERTICALS USING RA428. POSITION THE U CHANNEL IN THE DOOR STOP AREA AND ATTACH WITH SELF TAPPING SCREWS. REPEAT WITH JAMBS, BE SURE JAMBS ARE TIGHT WITH MITERED HEADER. ATTACH SNAP ON DOOR STOPS TO HEADER AND JAMBS.
4. DRILL AND TAP FOR HINGES PRIOR TO INSTALLING USING SELF DRILLING TEK SCREWS BY RACO. STEEL STUDS DO NOT COME PRE DRILL AND TAPPED FROM THE FACTORY.

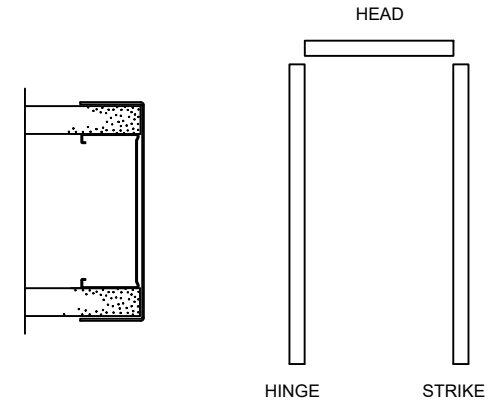
STEEL CHANNEL / WALL ASSEMBLY

STEP 1



PLUMB AND ATTACH STEEL CHANNEL TO WALL

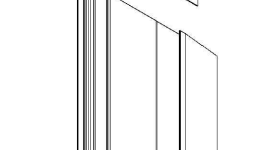
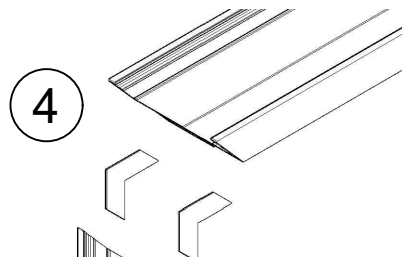
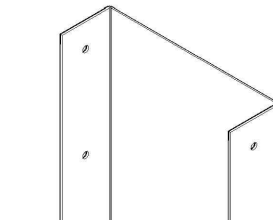
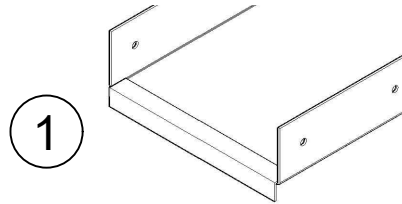
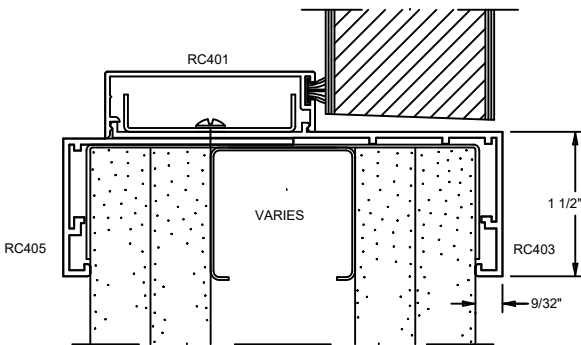
STEP 2



ROUGH OPENING DIMENSIONS:
 WIDTH = DOOR OPENING + 7/16"
 HEIGHT = DOOR OPENING + 1/4"
 DRYWALL STUDS PLUMB TO SHEETROCK OPENING

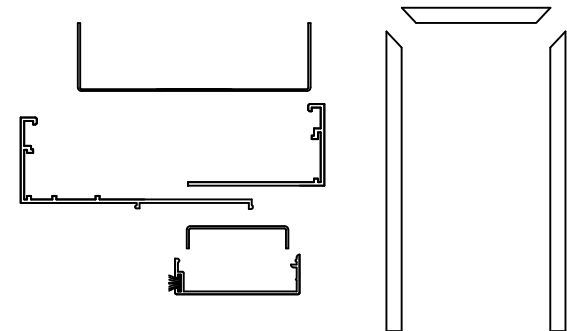
RACO CLASSIC 90MIN RATED ADJ. DOOR FRAME PARTS

ASSEMBLED VIEW



ASSEMBLE AND INSTALL ALUMINUM JAMBS

STEP 3



IF JAMB NEEDS TO BE CUT
 TRIM BOTTOM OF FRAME ONLY

NOT TO SCALE