



SOLUTIONS II Borrowed Light

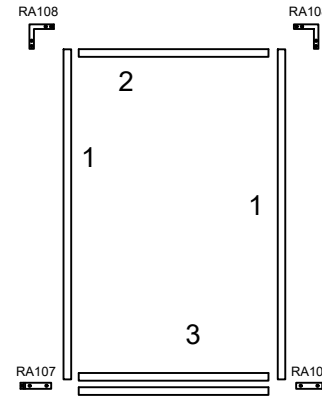
Full and Partial Height

FRAME MUST BE INSTALLED PLUMB AND SQUARE

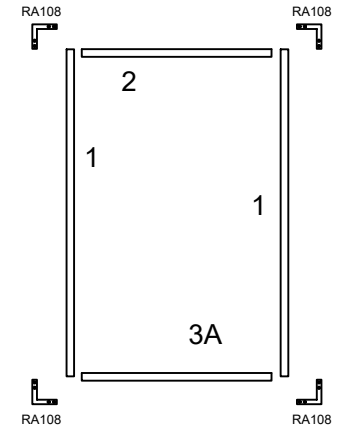
NOTE: TRIM REQUIRES FIELD NOTCHING AT EACH CLIP CONNECTION

General Installation Guidelines

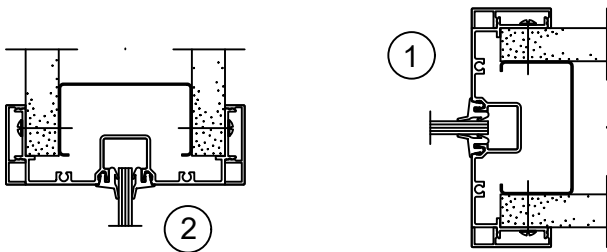
1. INSTALL VERTICALS OVER WALLS LOOSE
2. INSTALL HEADER OVER WALL, AND SET SILL CAN ON FLOOR. CENTER EACH IN WALL.
 - 2A INSTALL BASE OVER DRYWALL IN BETWEEN VERTICAL (PARTIAL HEIGHT)
3. PULL ONE VERTICAL TO HEADER AND ATTACH CORNER CLIP. LEVEL JAMBS AND HEADER AND ATTACH TO WALLS
4. SCREW SILL CAN AND BASE TO FLOOR
 - 4A SCREW SILL TO WALL (PARTIAL HEIGHT)
5. PULL OTHER JAMB TO HEADER AND SILL. ATTACH CLIPS TO CORNERS AND FASTEN JAMBS TO WALL.
6. INSTALL ONE SIDE OF VINYL. INSTALL GLASS AND REMOVABLE STOP AND FINISH GLAZING VINYL



FULL HEIGHT



PARTIAL HEIGHT



FULL HEIGHT
CUT FORMULA
HEAD AND SILL = DAYLIGHT OPENING
WALL JAMB = ROUGH OPENING - 3/8"

ROUGH OPENING
HEIGHT = DAYLIGHT OPENING + 3/4" + BASE HEIGHT
WIDTH = DAYLIGHT OPENING + 1-1/2"

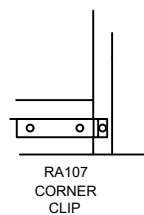
INVERT STUDS AT VERTICALS, HEAD , AND BASE

PARTIAL HEIGHT
CUT FORMULA
HEAD AND SILL = DAYLIGHT OPENING
WALL JAMB = DAYLIGHT OPENING + 1-3/8"

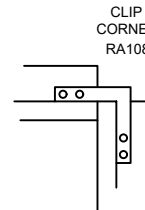
ROUGH OPENING
HEIGHT = DAYLIGHT OPENING + 1-3/4"
WIDTH = DAYLIGHT OPENING + 1-1/2"

INVERT STUDS AT VERTICALS, HEAD , AND BASE

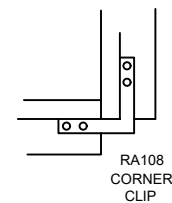
FULL HEIGHT SILL DETAIL



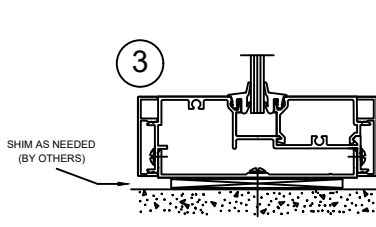
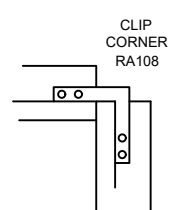
FULL HEIGHT HEAD DETAIL



PARTIAL HEIGHT SILL DETAIL



PARTIAL HEIGHT HEAD DETAIL



NOTE: CHECK WALL THICKNESS AND ROUGH OPENING DIMENSIONS, DO NOT PROCEED UNLESS THE DRYWALL IS WITHIN TOLERANCE.

NOT TO SCALE