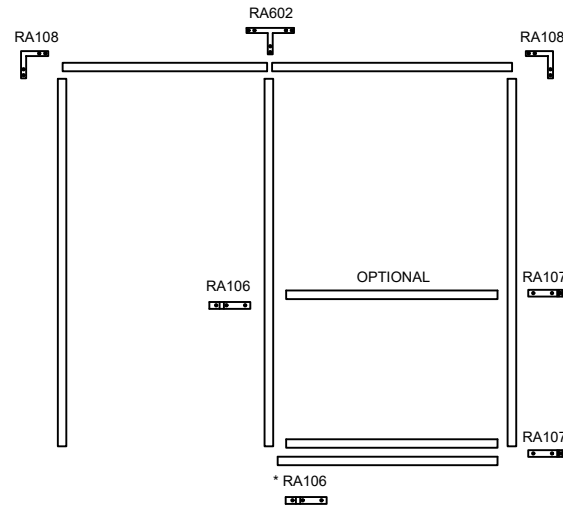




SOLUTIONS II 20 Minute Positive Pressure Frame with Sidelight Installation Instructions

General Installation Guidelines

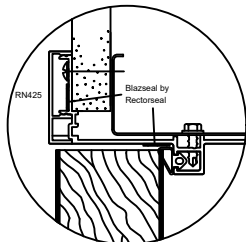
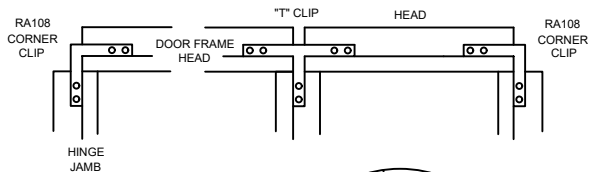
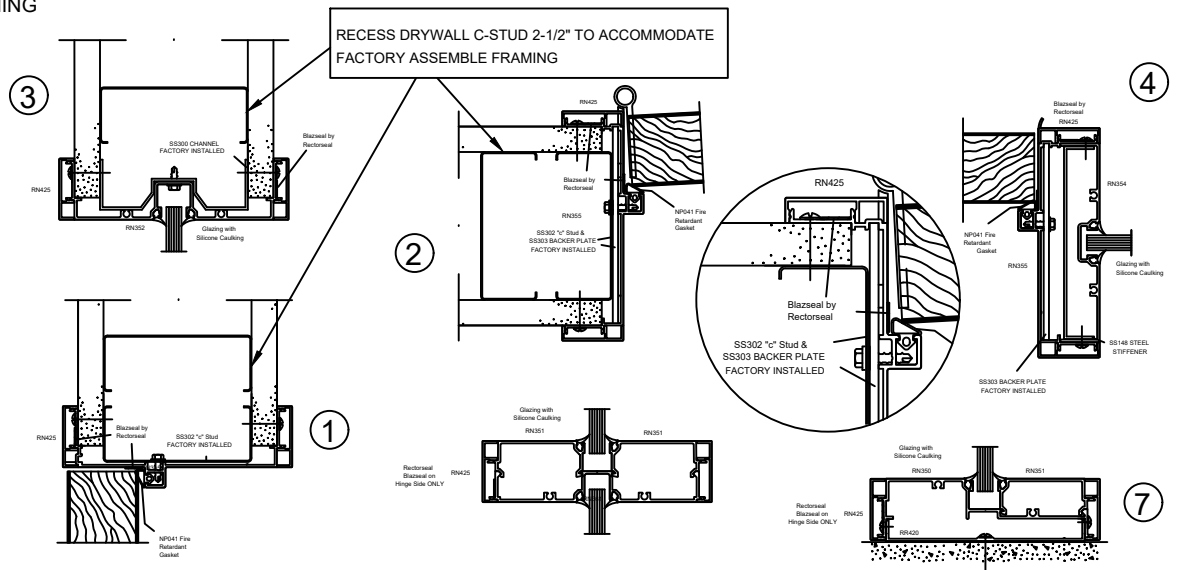
1. SLIP FRAME HEADER OVER DRYWALL TO DOOR OPENING HEIGHT AND LEVEL.
2. SLIP HINGE JAMB OVER DRYWALL. THE HEADER SHOULD REST IN DOOR STOP NOTCH.
3. SLIP SIDELIGHT HEADER OVER DRYWALL.
4. MOVE STRIKE JAMB / GLAZING INSERT ASSEMBLY INTO PLACE. THE HEADERS SHOULD REST ON THE STRIKE JAMB ASSEMBLY. ENSURE FRAME HEADER REST IN STRIKE JAMB DOOR STOP NOTCH.
5. SLIP GLAZING JAMB OVER DRYWALL. SIDELIGHT HEADER SHOULD REST ON TOP.
6. CLIP DOOR FRAME TOGETHER. LEVEL HEAD AND PLUMB JAMB. ATTACH TO DRYWALL BY SCREWING THRU THE SIDES OF THE FRAME WITH DRYWALL SCREWS (BY OTHERS) THAT ARE LONG ENOUGH TO ENGAGE THE C-STUD IN THE WALL. PLACE THE FIRST SCREW WITHIN 3" OF THE TOP OF THE FRAME AND THE BOTTOM SCREW WITHIN 2" OF THE OF THE FRAME. SPACE REMAINING SCREWS EVERY 9-12" APART. NOTE - AT EACH HINGE CUTOUT PLACE A SCREW JUST ABOVE AND BELOW THE HINGE CUTOUT AT EACH LOCATION. SCREWS WILL BE COVERED ONCE TRIM IS INSTALLED.
7. FIT SILL CHANNEL TO FLOOR WITH SILL CHANNEL INSERTED INTO STRIKE ASSEMBLY. PLUM / LEVEL STRIKE ASSEMBLY AND ATTACH STRIKE TO SILL CHANNEL USING (RA106) CLIP.
8. THROAT SILL CHANNEL WITH GLAZING BASE. ENSURE ITS LEVEL AND SCREW TO SILL CHANNEL. INSTALL CLIPS AS SHOWN.
9. INSTALL BASE SNAPS.
10. INSTALL TRIM ON FRAME AND SIDELIGHT NOTCH AS REQUIRED.



ST137



FRAMES GREATER THAN 8' REQUIRE HORIZONTAL MULLION



DO NOT ALTER

NOTE: TRIM REQUIRES FIELD NOTCHING AT EACH CLIP CONNECTION.
NOTE: STEEL FOR FIRE RATING COMES PRE-INSTALLED FROM FACTORY
NOTE: GLASS IS WET GLAZED INTO SIDELIGHT USING 100% SILICONE.

NOT TO SCALE