



SOLUTIONS I Non-Rated Adjustable Door Frame Installation Instructions

IT IS RECOMMENDED TO HAVE TWO PEOPLE FOR INSTALLATION

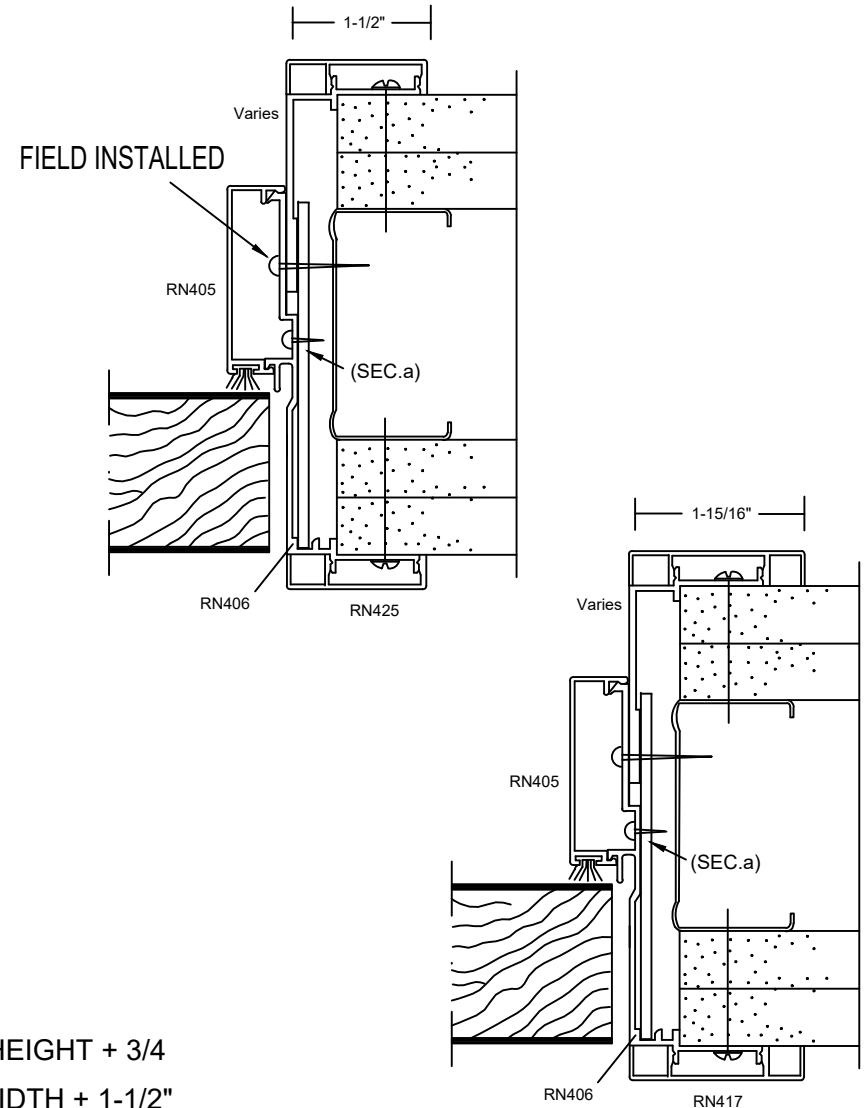
1. INSERT HEADER FRONT LEG SECTION IN TO THE DRYWALL OPENING AND HOLD IN PLACE.
2. INSERT HINGE AND STRIKE JAMB FRONT LEG SECTIONS IN TO DRYWALL OPENING.
3. LEVEL THE HEADER AND SCREW IT TO THE DRYWALL WITH DRYWALL SCREWS THAT ARE LONG ENOUGH TO ENGAGE THE C-STUD. THE FIRST SCREW ON EACH END MUST BE WITHIN 2" WITH THE ADDITIONAL SCREWS NO MORE THAN 12" ON CENTER APART.
4. ATTACH THE RA108 CORNER CLIPS TO THE HEADER, AND THE HINGE AND STRIKE JAMBS.
5. PLUMB AND ALIGN THE HINGE JAMB. ATTACH TO DRYWALL BY SCREWING THRU THE SIDES OF THE FRAME WITH DRYWALL SCREWS (BY OTHERS) THAT ARE LONG ENOUGH TO ENGAGE THE C-STUD IN THE WALL. PLACE THE FIRST SCREW WITHIN 3" OF THE TOP OF THE FRAME AND THE BOTTOM SCREW WITHIN 2" OF THE OF THE FRAME. SPACE REMAINING SCREWS EVERY 9-12" APART. NOTE - AT EACH HINGE AND STRIKE CUTOUT PLACE A SCREW JUST ABOVE AND BELOW THE HINGE/STRIKE CUTOUT AT EACH LOCATION. SCREWS WILL BE COVERED ONCE TRIM IS INSTALLED.
6. PLUMB AND ALIGN THE STRIKE JAMB. ATTACHED TO THE DRYWALL IN THE SAME MANNER AS THE HINGE JAMB.
7. INSERT THE BACK LEG SECTIONS INTO THE BACK OF THE HEADER AND JAMBS.
8. ATTACH THE RA108 CORNER CLIPS TO THE HEADER, AND THE HINGE AND STRIKE JAMBS.
9. ATTACH THE HEADER AND THE JAMB BACK LEG SECTIONS TO THE DRYWALL IN THE SAME MANNER AS THE FRONT LEG SECTIONS.
10. SCREW FRONT AND BACK LEGS TOGETHER ON DOOR STOP AREA AS SHOWN IN DETAIL (SEC.a) PLACE ONE SCREW WITHIN 2" OF EACH END AND THE EVERY 8"-10" APART.
11. SNAP THE HEADER DOOR STOP ON THE FRONT SECTION.
12. SNAP THE JAMB DOOR STOPS ON THE FRONT SECTION.
13. SNAP THE TRIM ON BOTH SIDES ON THE FRAME.
14. IF USING CYLINDRICAL LOCK. INSTALL RACO SUPPLIED EXTENDED LIP STRIKE PLATE. (ALL OTHER TYPES BY OTHERS).

$$\text{ROUGH OPENING HEIGHT} = \text{DOOR OPENING HEIGHT} + 3/4$$

$$\text{ROUGH OPENING WIDTH} = \text{DOOR OPENING WIDTH} + 1-1/2"$$

Leg 1 - 4" - 4-3/4"
 Leg 2 - 4-3/4" - 5-1/2"
 Leg 3 - 5-1/2" - 6-3/8"
 Leg 4 - 6-3/8" - 7-1/8"

Leg 5 - 7-1/8" - 7-7/8"
 Leg 6 - 7-7/8" - 8-3/4"
 Leg 7 - 8-3/4" - 9-1/8"
 Leg 8 - 9-1/8" - 9-3/4"



NOT TO SCALE