

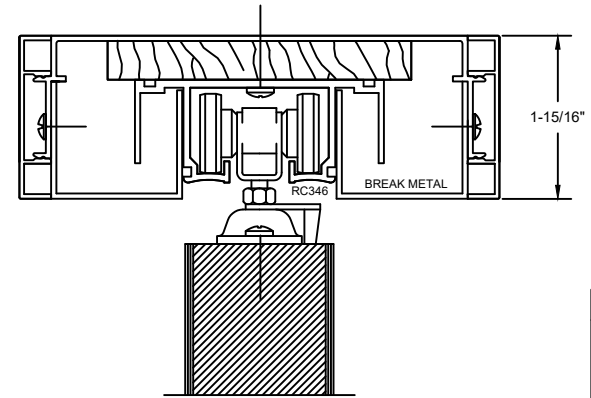


# SOLUTIONS II Bi-fold Door Frame Installation Instructions

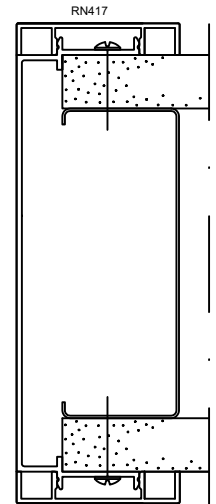
## General Installation Guidelines

1. INSTALL JAMBS OVER DRYWALL, BUT DO NOT SECURE TO WALL AT THIS TIME,
2. SLIP HEADER OVER DRYWALL
3. PLUMB AND LEVEL HEADER AND JAMBS.  
SECURE HEADER TO JAMBS USING RA108 CLIPS
4. INSTALL ROLLERS, BUMPERS, AND PIVOT HARDWARE INTO ROLLER TRACK.
5. CENTER WOOD BLOCKING AND ROLLER TRACK INTO HEADER.  
SECURE ROLLER TRACK AND WOOD BLOCKING WITH PAN HEAD WOOD SCREWS  
AT ENDS AND 24" ON CENTER. SCREWS SHOULD BE LONG ENOUGH TO  
PENETRATE HEADER ASSEMBLY AND STRUCTURAL SUPPORT ABOVE.
6. INSTALL BOTTOM PIVOT HARDWARE. PLUMB AND LEVEL WITH HEADER PIVOT.
7. INSTALL HINGE AND PIVOT HARDWARE IN DOORS.
8. INSTALL PIVOT DOORS AND JOINING DOORS.
9. INSTALL BALANCE OF DOORS. ADJUST TO LEVEL AND PLUMB.
9. INSTALL TRIM

## HEADER ASSEMBLY



WALL JAMB



WALL JAMB

NOT TO SCALE