



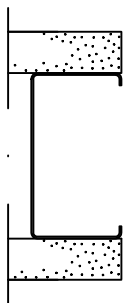
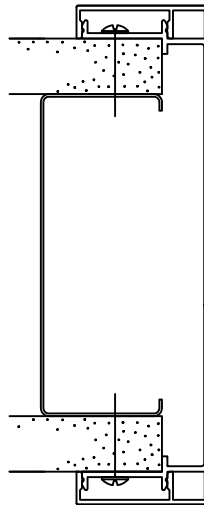
SOLUTIONS II Bi-Pass Door Frame

Installation Instructions

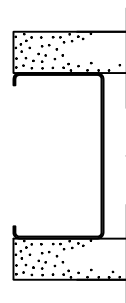
FRAME MUST BE INSTALLED PLUMB AND SQUARE

General Installation Guidelines

1. PLACE JAMBS OVER BOTH WALLS BUT DO NOT ATTACH.
2. INSERT ROLLERS INTO BOTH TRACKS.
3. ATTACH RA108 (4) TO THE HEAD ASSEMBLY.
4. LIFT HEAD INTO POSITION AND ATTACH CORNER CLIPS TO BOTH JAMBS.
5. ADJUST HEAD TO LEVEL AND ATTACH THE TOP OF BOTH JAMBS TO THE WALL.
6. SCREW THE HEAD TO THE DRYWALL C-STUD / CEILING GRID THROUGH EACH TRACK.
 - A ONE ATTACHMENT SCREW EVERY 18" IN EACH TRACK WITH SCREW WITH IN 2" OF EACH END.
 - B ON OPENING OVER 6' ADDITIONAL BLOCKING WILL BE REQUIRED WHEN HEAD GOES TO CEILING GRID.
7. PLUMB THE JAMBS AND ATTACH TO THE WALLS ON BOTH SIDES WITH DRYWALL SCREWS EVERY 12". WITH A SCREW WITH IN 2" OF THE ENDS.
8. CUT THE TRIM TO FIT ON SITE AND ATTACH.
 - A SEE DIAGRAM FOR TRIM PLACEMENT
9. ATTACH THE ROLLER RECEIVERS TO THE DOOR.
 - A ATTACH THE RECEIVER WITH IN 2" OF THE EDGE OF THE DOOR.
 - B RECEIVING SLOT FACING TOWARD THE EDGE.
10. ATTACH THE FLOOR GUIDE TO THE FLOOR AT THE CENTER POINT OF THE OPENING.
11. HANG THE DOOR. ENGAGE ROLLER TO ROLLER RECEIVER. ADJUST AND LEVEL DOOR.

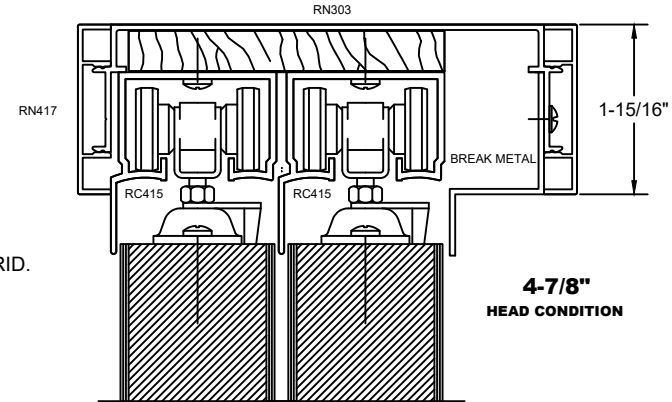


ROUGH OPENING WIDTH = CASSED OPENING WIDTH + 1-1/2"
 ** ROUGH OPENING HEIGHT = DOOR OPENING HEIGHT + 2-1/2"

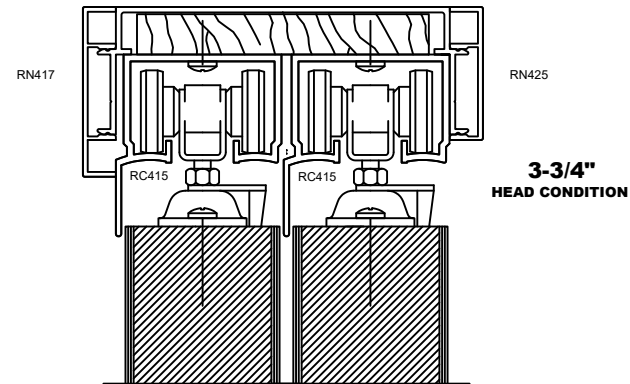


HEAD IS FACTORY ASSEMBLED

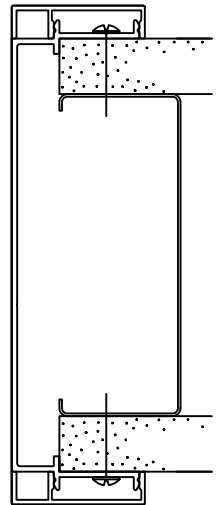
HEAD CONDITION IS FACTORY ASSEMBLED
 ATTACHES TO CEILING GRID OR DRYWALL



4-7/8"
HEAD CONDITION



3-3/4"
HEAD CONDITION



1. TO DETERMINED EITHER DOOR WIDTH OR THE CASSED OPENING WIDTH
 CASSED OPENING = DOOR WIDTH x 2 - 1"
 DOOR WIDTH = CASSED OPENING DIVIDED BY 2 + 1/2"
2. TO DETERMINED DOOR OPENING HEIGHT
 ACTUAL DOOR HEIGHT PLUS UNDER CUT + 1/4"
3. TO DETERMINED DOOR HEIGHT FROM OPENING HEIGHT
 ROUGH OPENING MINUS 2-1/2" - UNDER CUT + 1/4"

NOT TO SCALE