



SOLUTIONS II Offset Slider with Sidelight

Installation Instructions

FRAME MUST BE INSTALLED PLUMB AND SQUARE

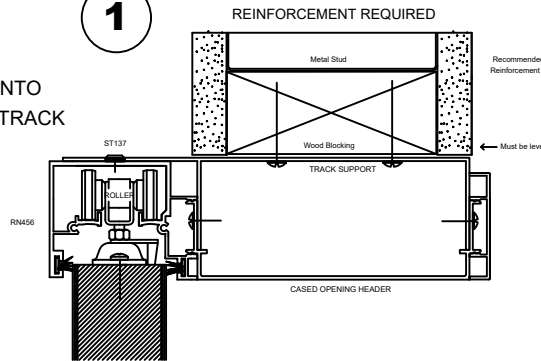
ST137



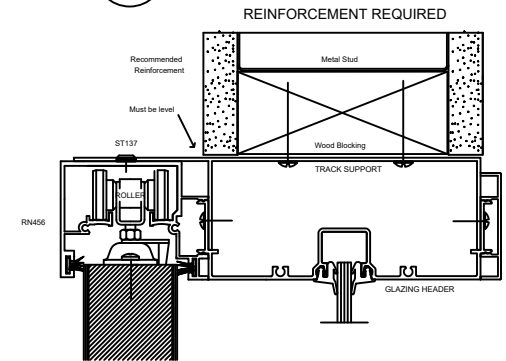
General Installation Guidelines

1. INSTALL TRACK SUPPORT TO REINFORCEMENT STRUCTURE AND LEVEL
2. ASSEMBLE SIDELIGHT WINDOW(S) WITH ST351
3. SLIP ASSEMBLED SIDELIGHT WINDOW(S) OVER FLOOR TRACK. CAM THE WINDOW / FLOOR TRACK ASSEMBLY INTO THE SIDELIGHT OPENING. MOVE INTO POSITION OVER WALL BUT DO NOT SCREW TO WALL AT THIS TIME. FLOOR TRACK SHOULD RUN FROM WALL JAMB TO INSIDE OF STRIKE JAMB.
4. SLIP CASED OPENING HEADER OVER TRACK SUPPORT TO DOOR OPENING HEIGHT AND LEVEL.
5. MEASURE AND CUT CASE OPENING JAMB.
6. SLIP CASED OPENING JAMB(S) OVER WALL AND GLAZING INSERT
7. SET DOOR OPENING WIDTH
8. VERIFY PLUMB AND SQUARENESS OF FRAME
9. ANCHOR COMPONENTS TO FLOOR, DRYWALL, AND TRACK SUPPORT
10. PRE-LOAD BUMPERS AND ROLLERS INTO RN456 TRACK
11. SNAP RN456 TRACK ONTO CASED OPENING AND SIDELIGHT HEAD MEMBERS
12. SCREW RN456 TO TRACK SUPPORT USING ST137
13. INSTALL RECEIVER TO CASED OPENING JAMB
14. ANCHOR RECEIVER TO FLOOR USING RA406 CLIP
15. INSTALL RECEIVER SNAP COVER
16. INSTALL TRIM
17. INSTALL FLOOR GUIDE
18. HANG DOOR

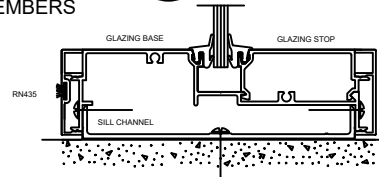
1



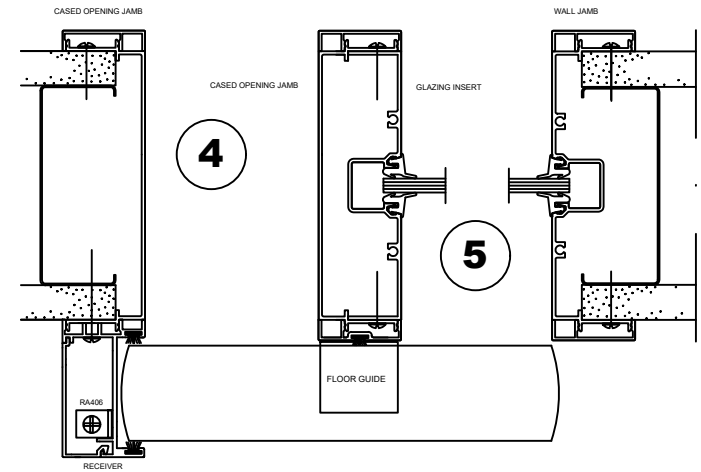
2



6

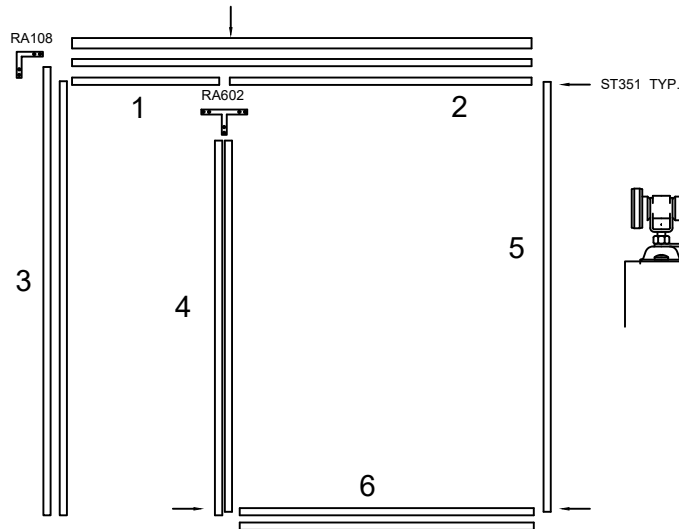


3



4

5



DOOR / ROLLERS

WOOD DOOR ROLLER BRACKET PLACEMENT:

Place hanger bracket at edge of door, 2" from edge of door to C/L of bracket.

ROUGH OPENING WIDTH = DOOR OPENING WIDTH + DAYLIGHT OPENING OF WINDOWS + WIDTH OF INTERMEDIATE VERTICAL MULLIONS + 1-1/2"

ROUGH OPENING HEIGHT = OUTSIDE FRAME DIMENSION

NOT TO SCALE



FLOOR GUIDE